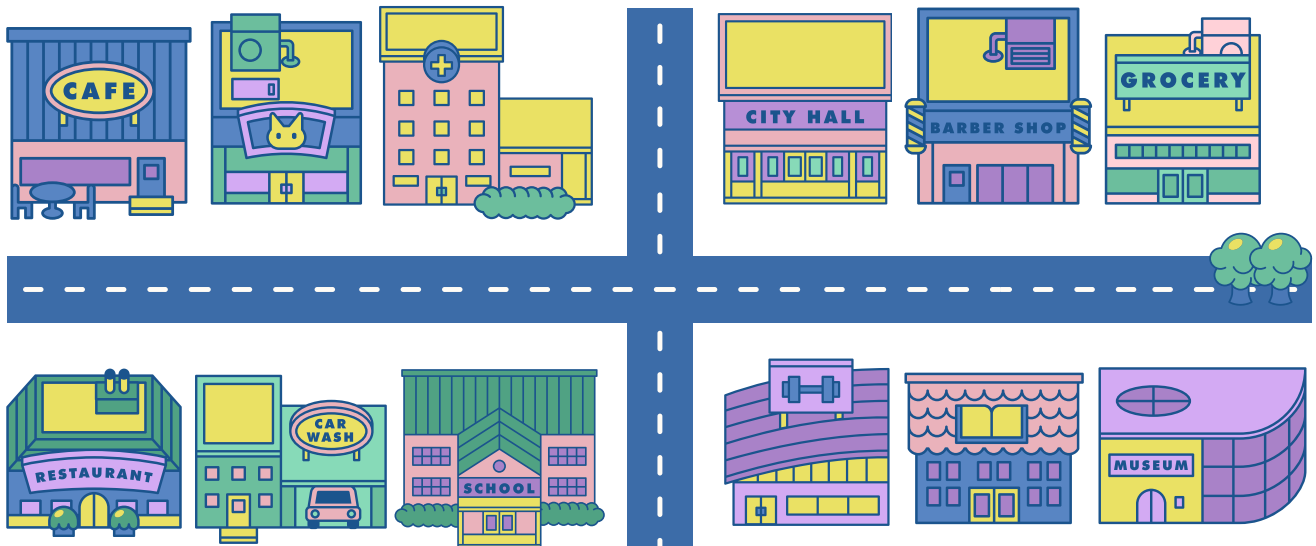


# Prepositions of place

Look at the map and complete the sentences with prepositions from the box. You may need to use each preposition more than once.



IN    NEXT TO    BETWEEN    OPPOSITE    IN FRONT OF    ON THE CORNER

1. There is a cafe \_\_\_\_\_
2. There is a car wash \_\_\_\_\_ the restaurant.
3. There is a gym \_\_\_\_\_ the school.
4. There is a library \_\_\_\_\_ the gym and the museum.
5. There are trees \_\_\_\_\_
6. There is a car \_\_\_\_\_ the car wash.
7. There are plants \_\_\_\_\_ the restaurant.
8. There is a barber shop \_\_\_\_\_ the library.
9. There is a pet shop \_\_\_\_\_ the cafe and the hospital.
10. There is a grocery \_\_\_\_\_ the barber shop.

